



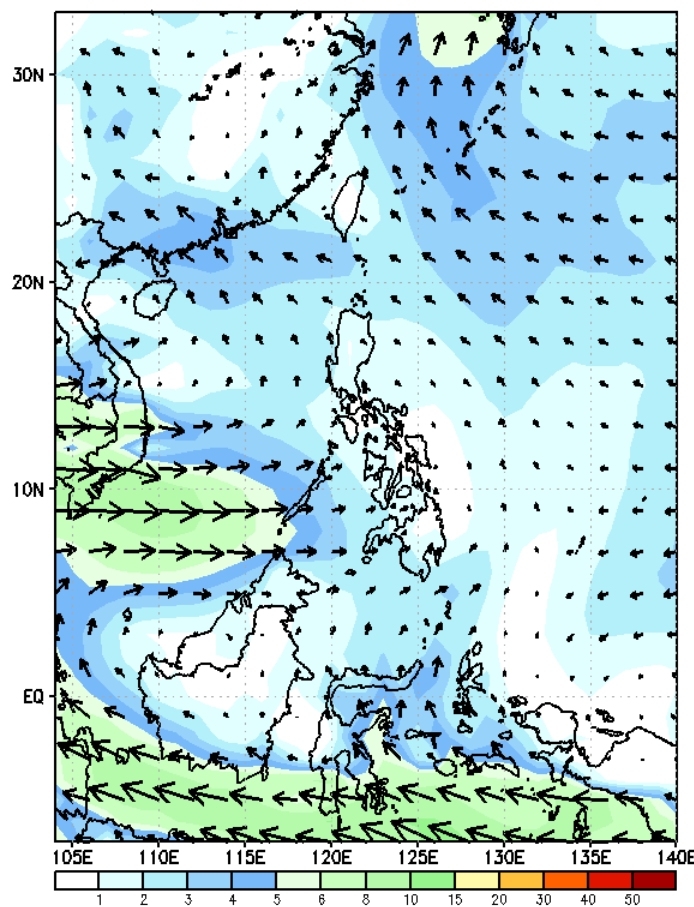
# Week 1 & Week 2 Forecast for the Philippines using GEFS Model



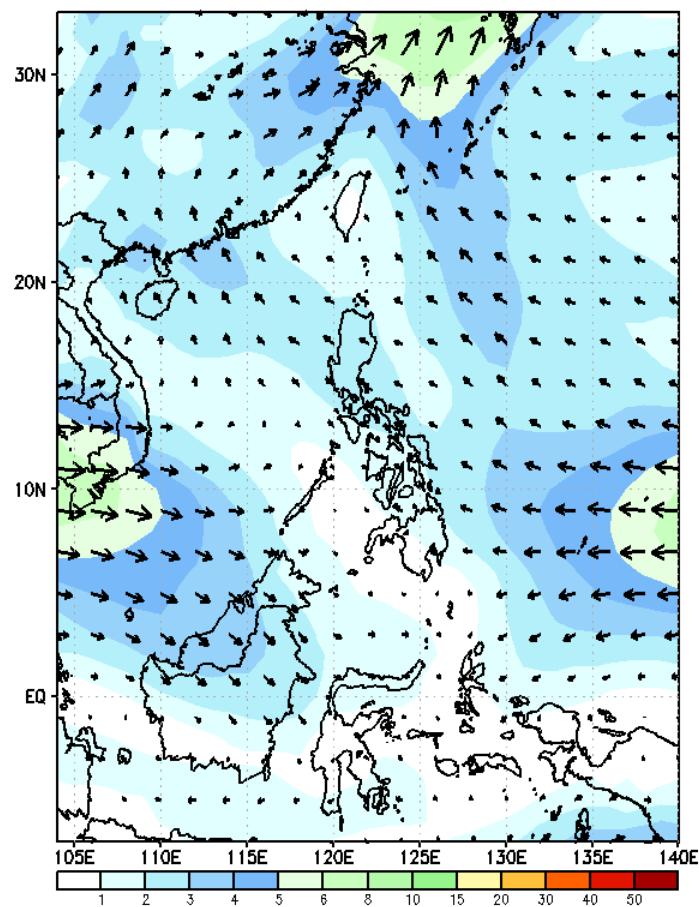
# GEFS Week-1 Forecasts: Wind Forecast

Week 1: Sep 13-19, 2023

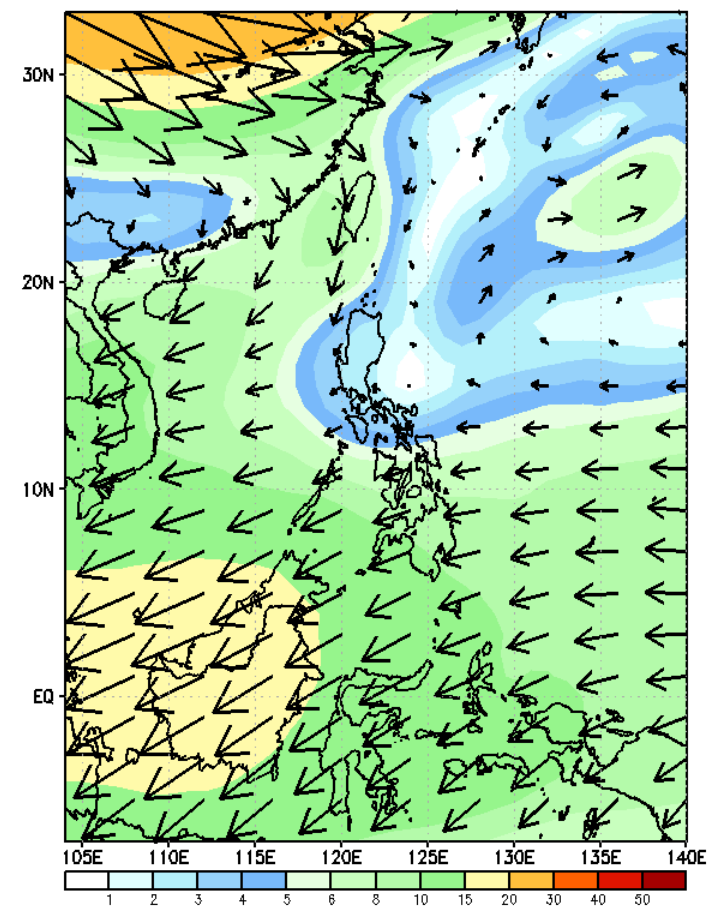
GEFS Week-1 850-hPa Wind Total  
Valid: 20230913 - 20230919



GEFS Week-1 700-hPa Wind Total  
Valid: 20230913 - 20230919



GEFS Week-1 200-hPa Wind Total  
Valid: 20230913 - 20230919

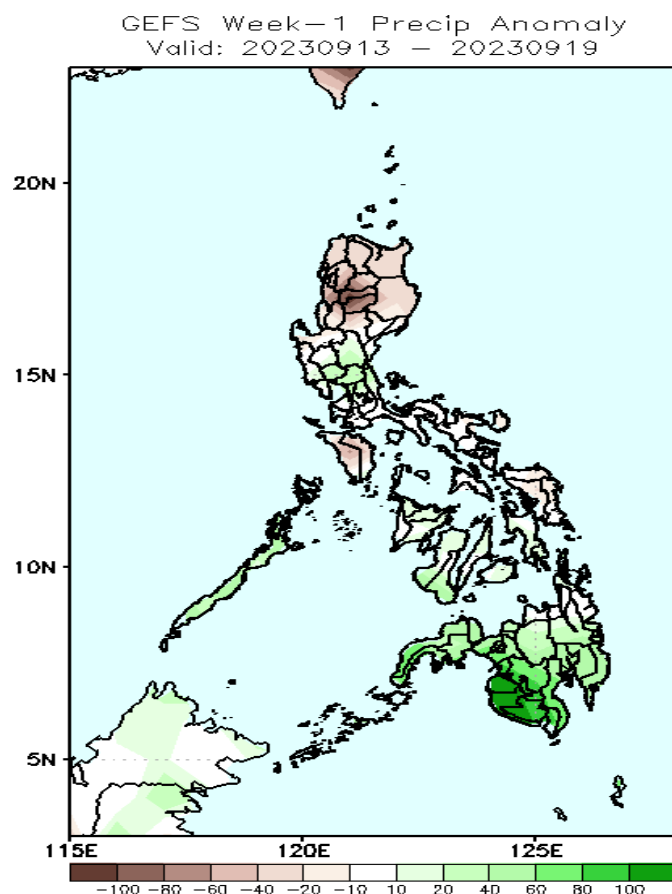


Weak Southwest Monsoon is forecasted to affect the western sections of Luzon and Visayas. Easterlies affecting the rest of the country.

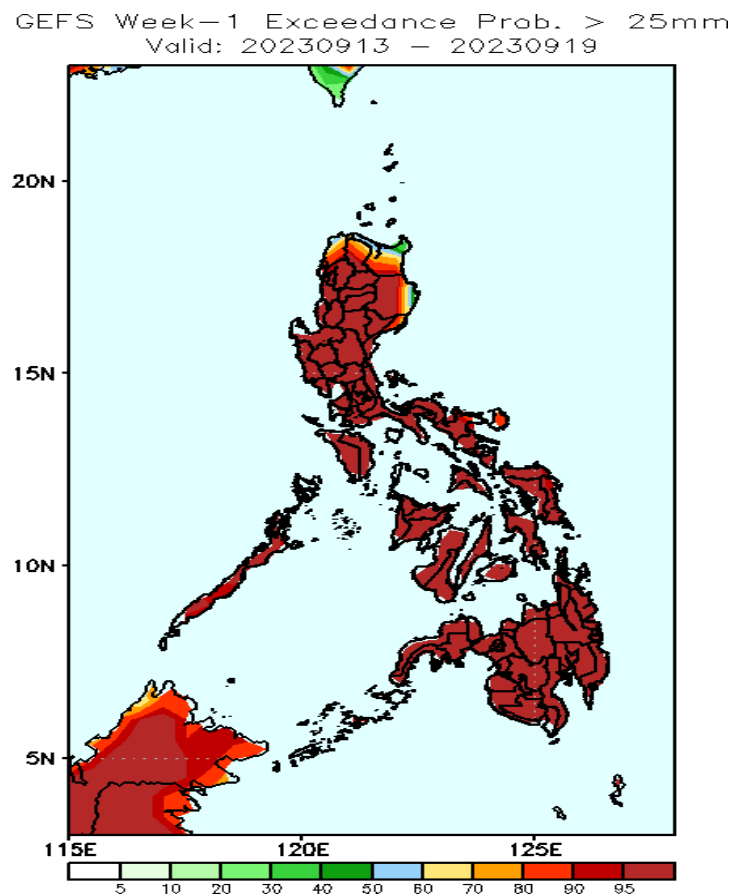
# Precipitation Anomaly and Exceedance Probability > 25/50 mm



Week 1: Week 1: Sep 13-19, 2023

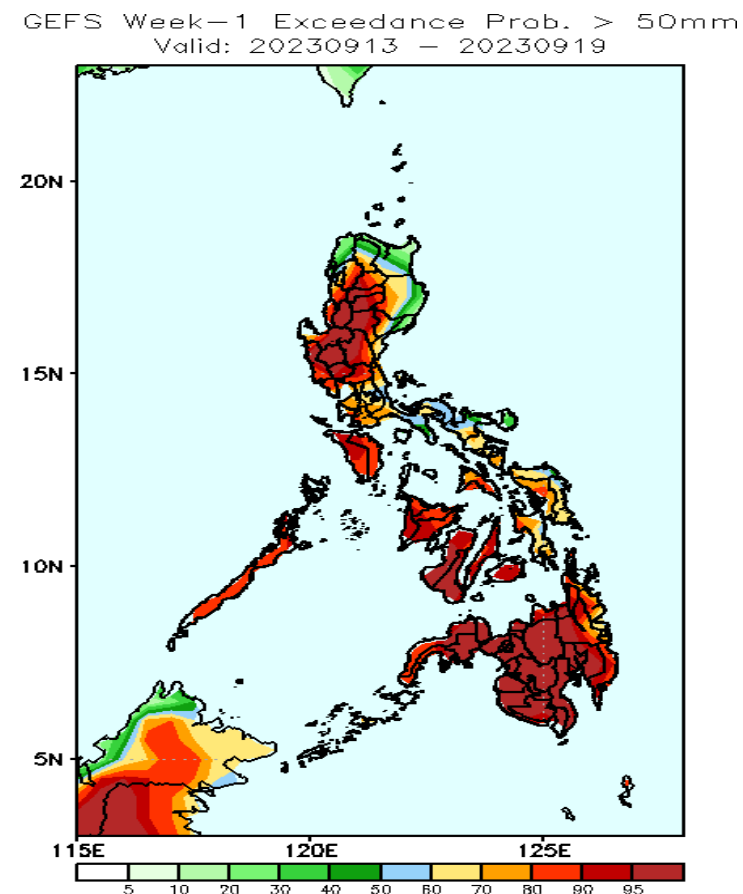


Increase in rainfall of 40-80mm is expected in most parts of the country except in Ilocos Provinces, La Union, Apayao and Cagayan Valley where a deficit of 20-40mm in rainfall is more likely.



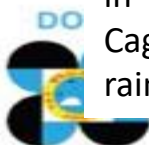
## Probability to Exceed 25mm

- High to very high across the country.

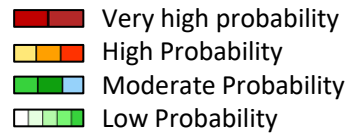


## Probability to Exceed 50mm

- High to very high in most parts of Luzon, Visayas, and Mindanao.
- Moderate to high over Bicol Region, Quezon, and Eastern Visayas.
  - Low to moderate over the eastern- and northernmost portions of northern Luzon.

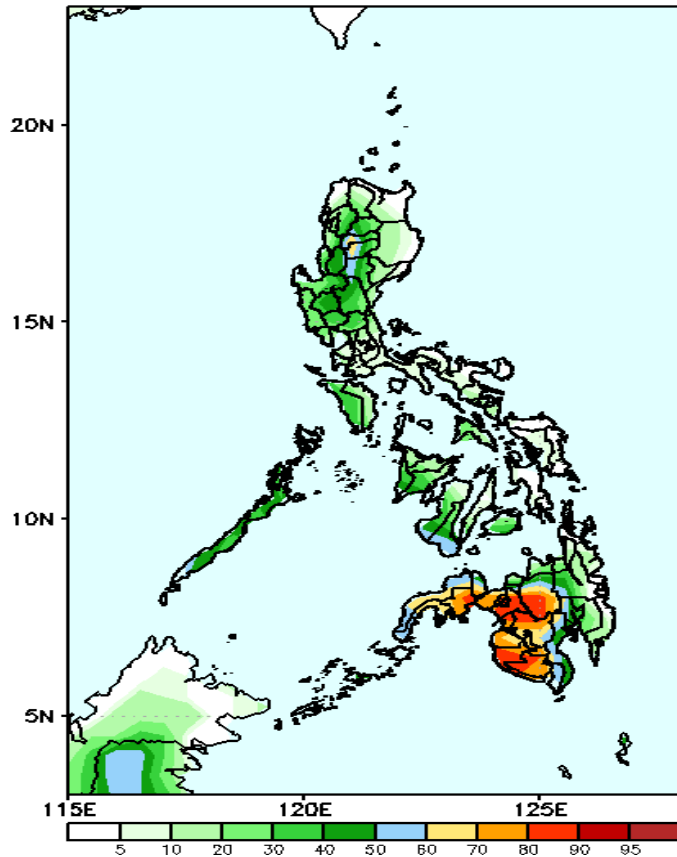


# Exceedance Probability > 100/150/200 mm



## Week 1: Week 1: Sep 13-19, 2023

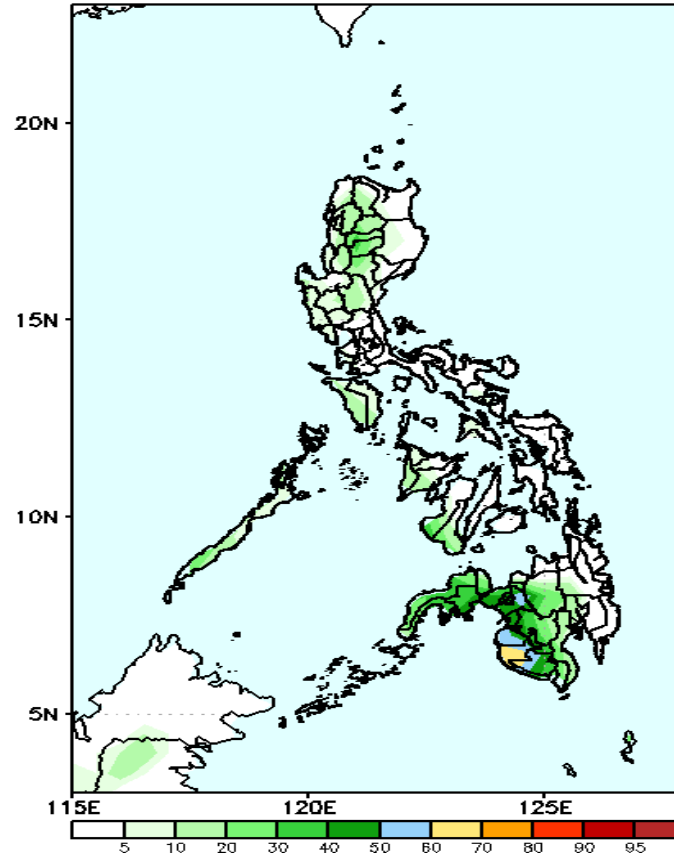
GEFS Week-1 Exceedance Prob. > 100mm  
Valid: 20230913 - 20230919



### Probability to Exceed 100mm

- Moderate to high over Kalinga, Mountain Province, Ifugao, BARMM, SOCCSKSARGEN, Bukidnon, Lanao Provinces, Zamboanga Peninsula;
- Low over the rest of the country.

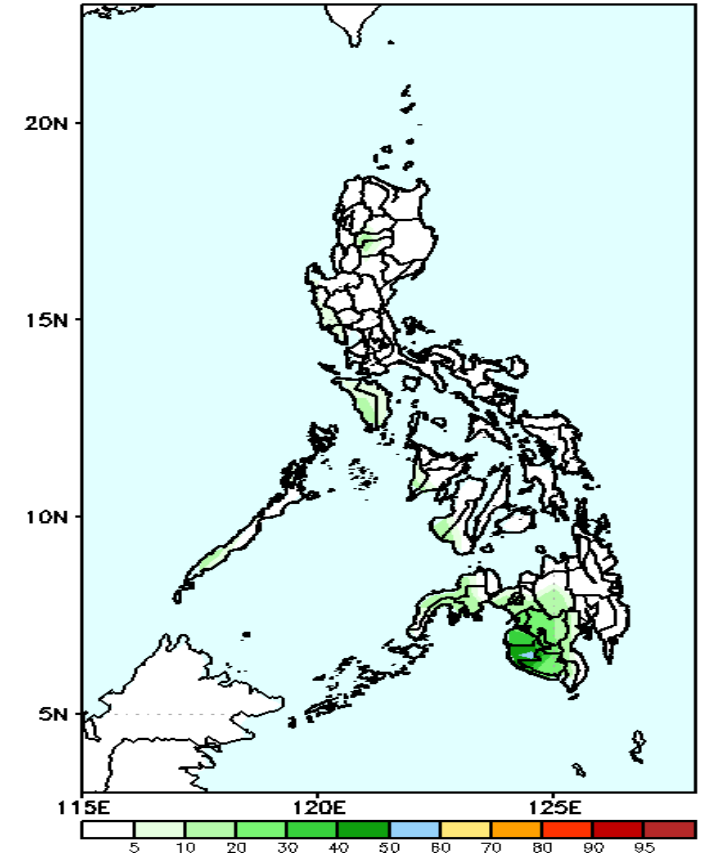
GEFS Week-1 Exceedance Prob. > 150mm  
Valid: 20230913 - 20230919



### Probability to Exceed 150mm

- Moderate over portions of BARMM, SOCCSKSARGEN, and Lanao Provinces;
- Low over the rest of the country.

GEFS Week-1 Exceedance Prob. > 200mm  
Valid: 20230913 - 20230919



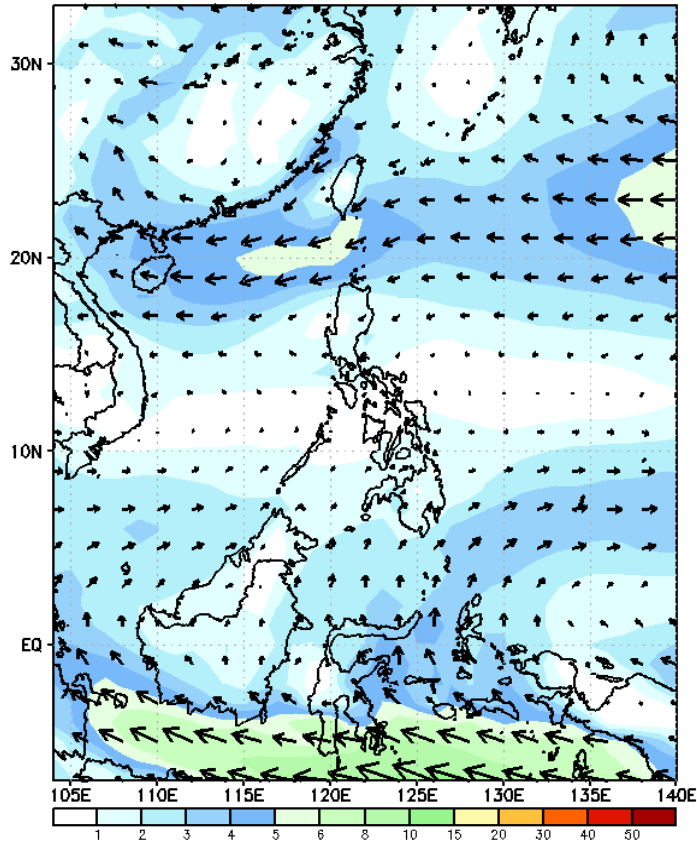
### Probability to Exceed 200mm

- Low in most parts of the country.

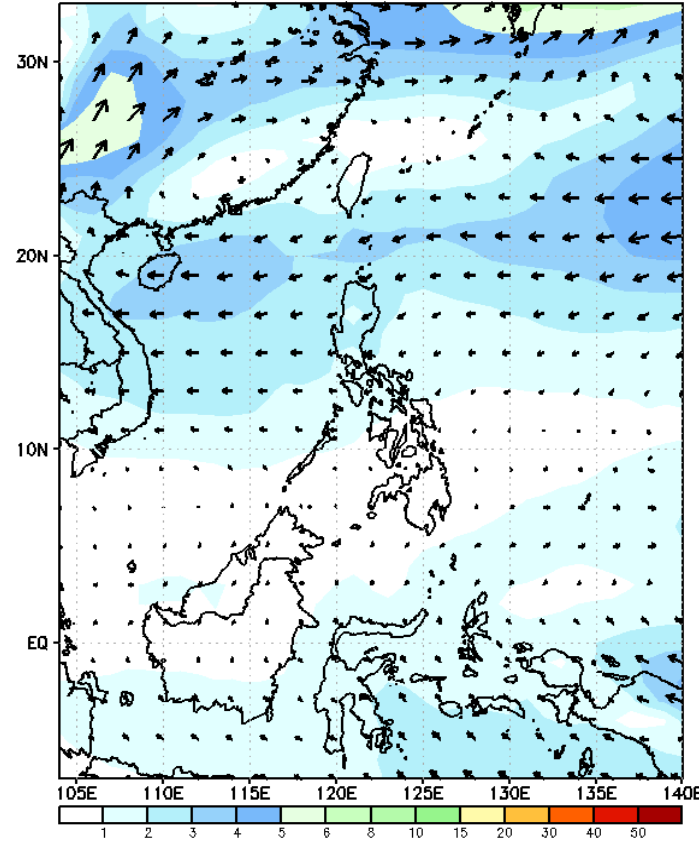
# GEFS Week-2 Forecasts: Wind Forecast

Week 2: Sep 20-26, 2023

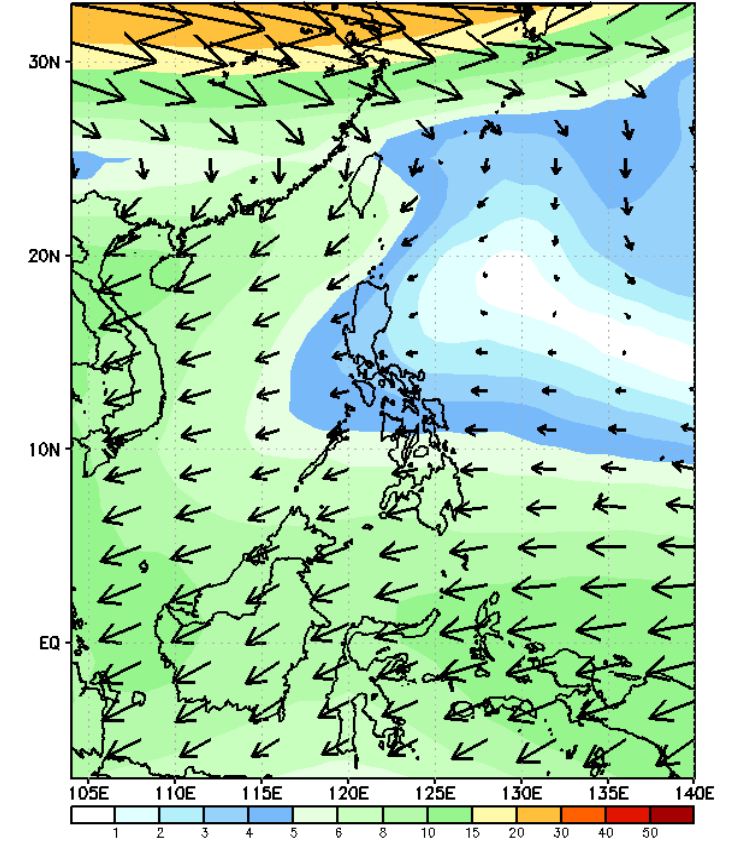
GEFS Week-2 850-hPa Wind Total  
Valid: 20230920 - 20230926



GEFS Week-2 700-hPa Wind Total  
Valid: 20230920 - 20230926



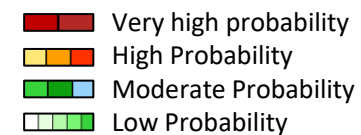
GEFS Week-2 200-hPa Wind Total  
Valid: 20230920 - 20230926



Weak Southwest Monsoon is forecasted to affect some areas in Western Luzon.  
Easterlies affecting the rest of the country.

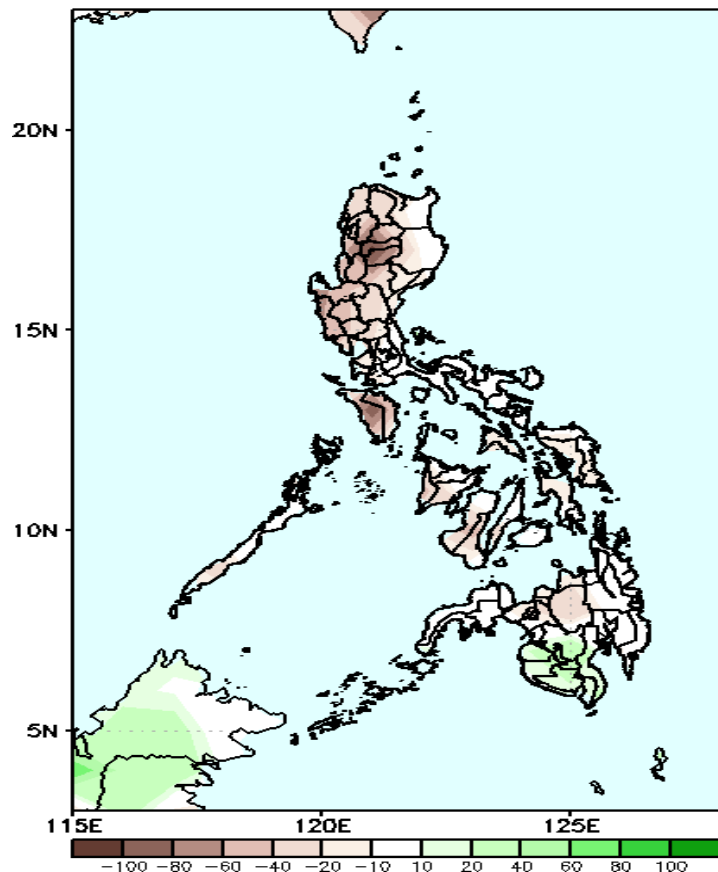


# Precipitation Anomaly and Exceedance Probability > 25/50 mm

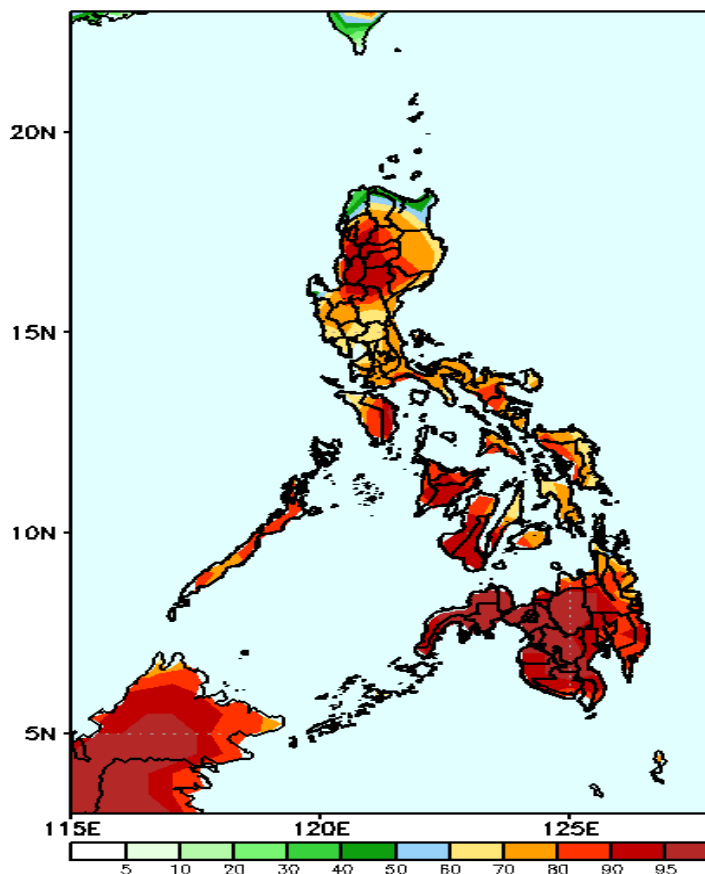


Week 2: Sep 20-26, 2023

GEFS Week-2 Precip Anomaly  
Valid: 20230920 - 20230926



GEFS Week-2 Exceedance Prob. > 25mm  
Valid: 20230920 - 20230926



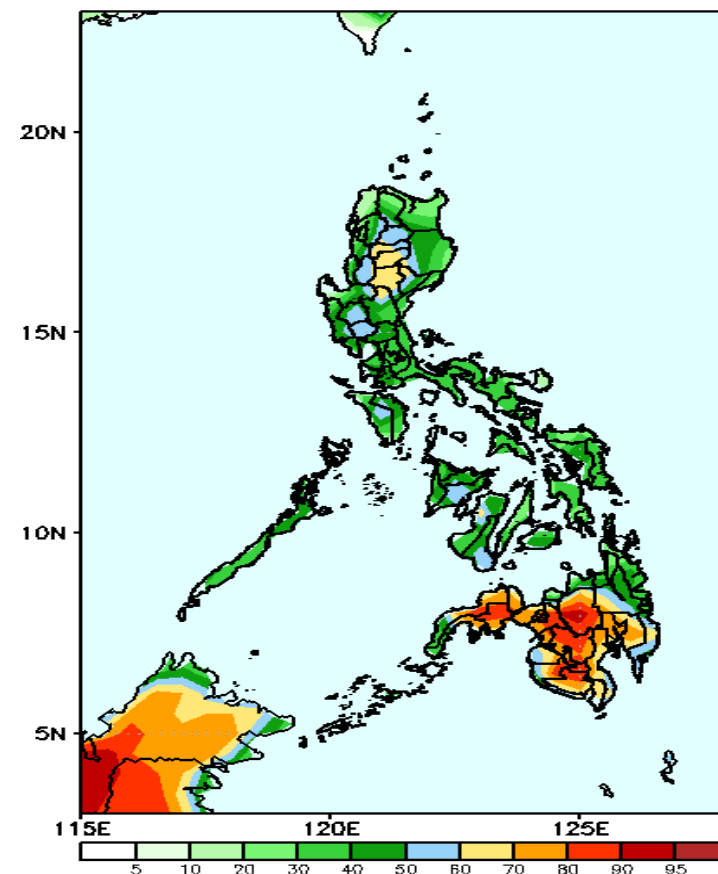
Probability to Exceed 25mm

- High to very high in most parts of the country;
- Moderate to high over the extreme northern Luzon.

Probability to Exceed 50mm

- High to very high in most parts of Mindanao and portion of CAR;
- Moderate over the rest of the country.

GEFS Week-2 Exceedance Prob. > 50mm  
Valid: 20230920 - 20230926



Probability to Exceed 50mm

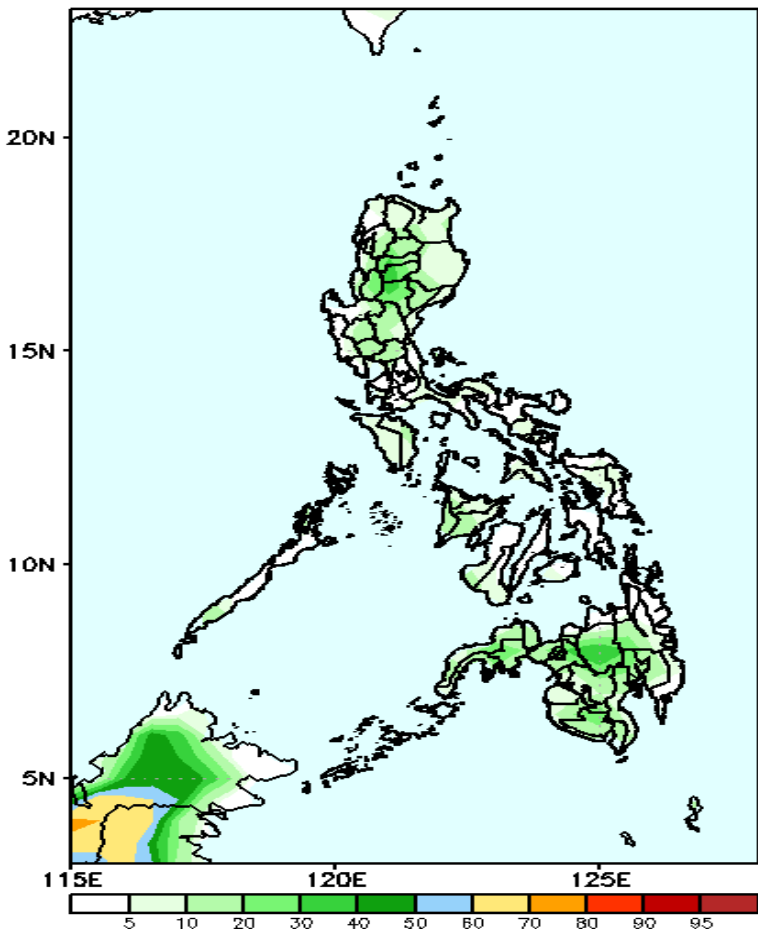
- High to very high in most parts of Mindanao and portion of CAR;
- Moderate over the rest of the country.

Rainfall deficit of 20-60mm is expected in most parts of the country except in Mindanao where 20-40mm increase of rainfall is more likely.

# Exceedance Probability > 100/150/200 mm

Week 2: Sep 20-26, 2023

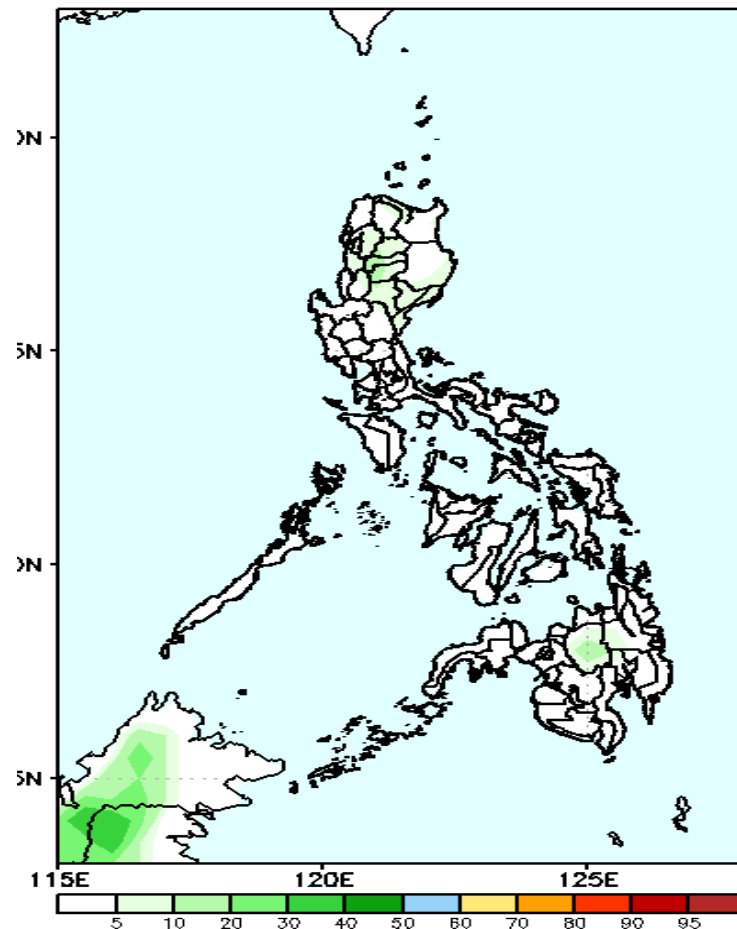
GEFS Week-2 Exceedance Prob. > 100mm  
Valid: 20230920 - 20230926



Probability to Exceed 100mm

- Low across the country.

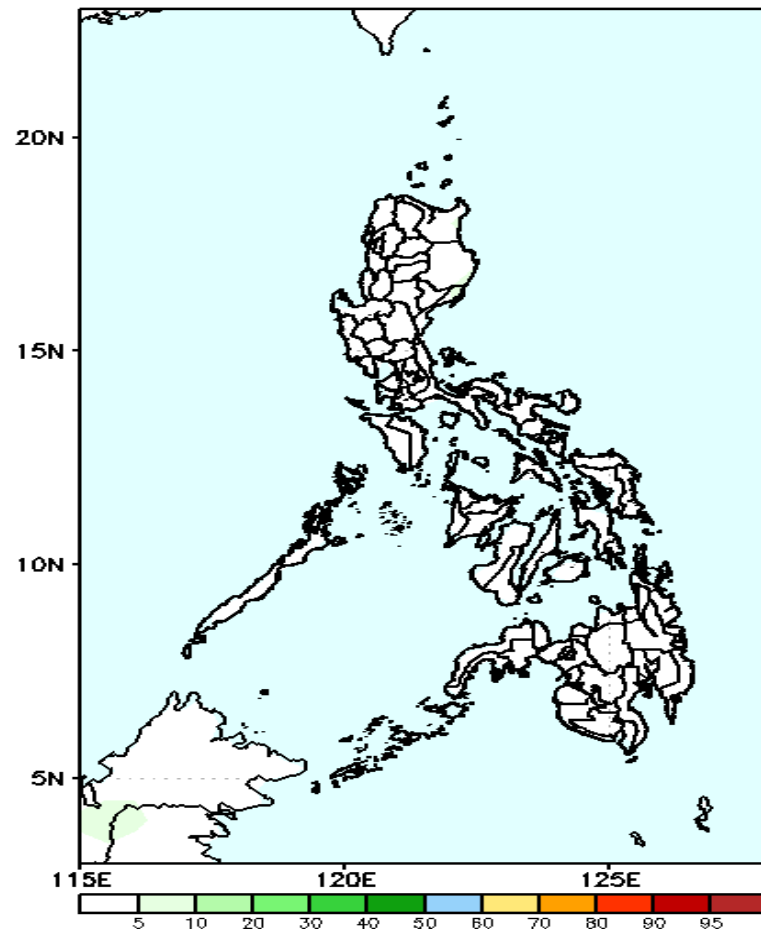
GEFS Week-2 Exceedance Prob. > 150mm  
Valid: 20230920 - 20230926



Probability to Exceed 150mm

- Low in most parts of the country.

GEFS Week-2 Exceedance Prob. > 200mm  
Valid: 20230920 - 20230926



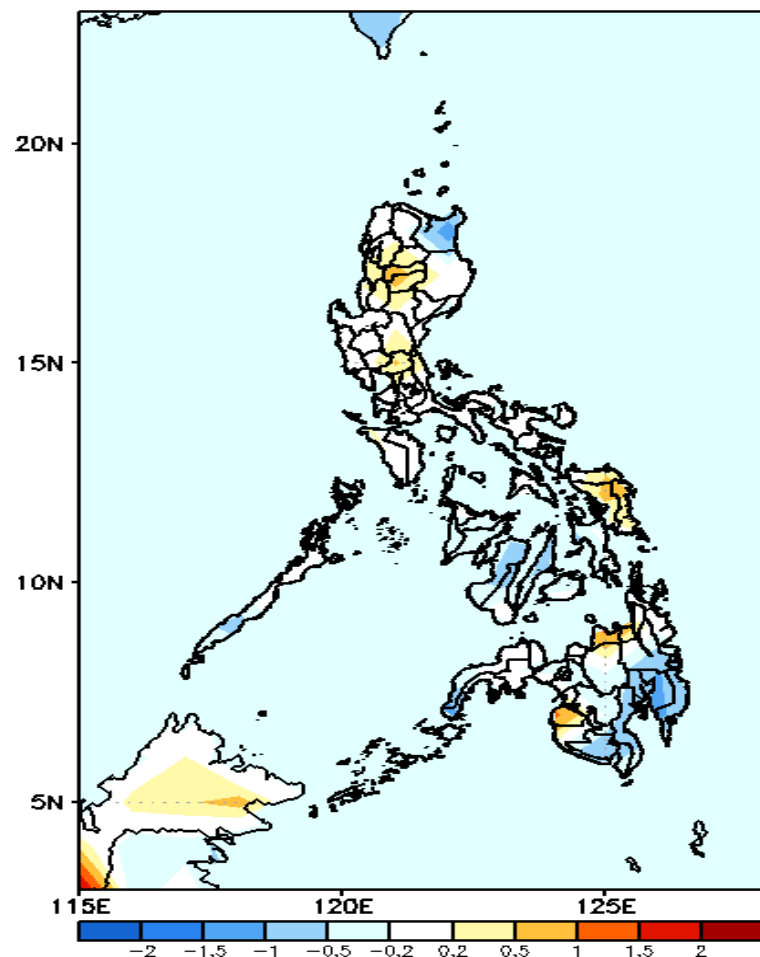
Probability to Exceed 200mm

- Low in most parts of the country.

Very high probability  
High Probability  
Moderate Probability  
Low Probability

# GEFS Week-1 & 2 Forecasts: T2m Anomaly

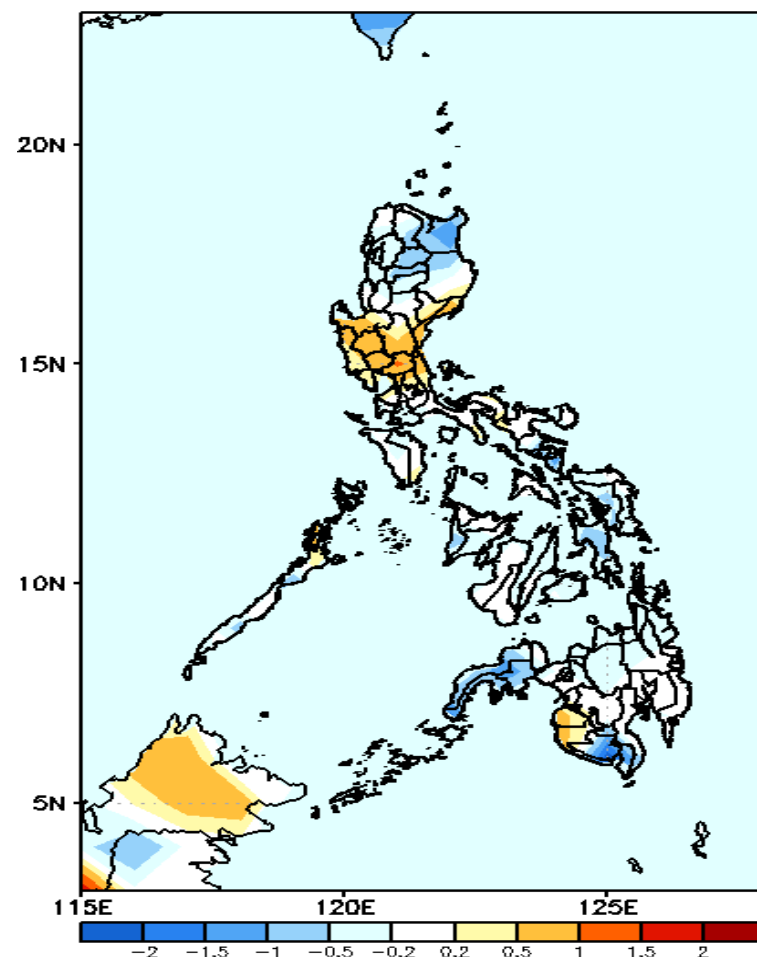
GEFS Week-1 T2m Anomaly  
Valid: 20230913 - 20230919



## 2m Temperature Week 1: Sep 13-19, 2023

Average to slightly warmer than average surface air temperature will likely experience in most parts of the Luzon, Leyte provinces, Misamis Oriental, Maguindanao and Sultan Kudarat while slightly cooler to cooler than average temperature is expected in Cagayan, Palawan and the remaining parts of Visayas and Mindanao.

GEFS Week-2 T2m Anomaly  
Valid: 20230920 - 20230926



## 2m Temperature Week 2: Sep 20-26, 2023

Average to cooler than average surface air temperature will likely be experience in most parts of Northern and Southern Luzon and most parts of Visayas and Mindanao while slightly warmer to warmer than average temperature is expected in Pangasinan, Central Luzon, Maguindanao and Sultan Kudarat .